

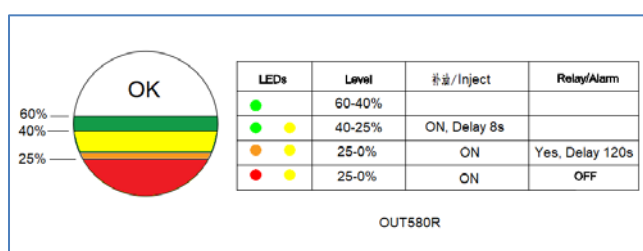
## OUT580R/OUT580RM Level regulator



### Function

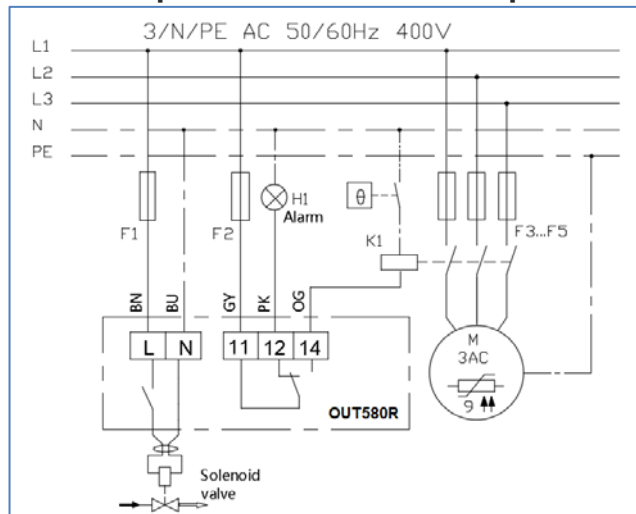
OUT580R uses a Hall-Sensor to measure the oil level. A magnetic float changes its position according to the oil level, not prone to errors by foaming or light. The hall sensor converts these magnetic field changes into an equivalent signal, which is used by the electronic controller to open or close an external solenoid valve which feeds missing oil directly into the compressor sump. If the oil level drops into the red zone the OUT580R generates an alarm signal and the alarm contact (SPDT) changes into alarm state. The latter may be used to shut down the compressor. In the Alarm status the OUT580R is still feeding oil into the compressor. If the oil level comes back to normal, the Alarm will be reset.

### Sight-glass level control zones



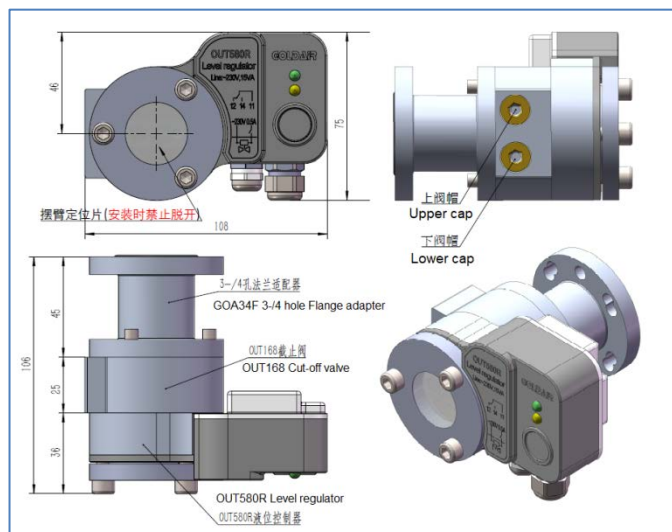
### Wiring diagram1

(For low pressure chamber compressors)



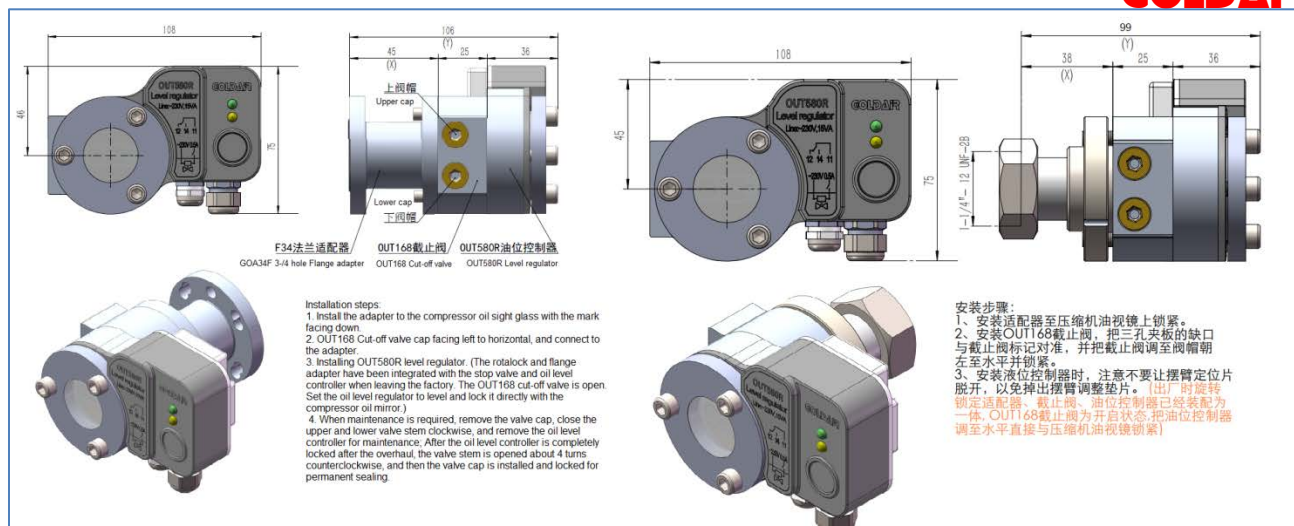
Note: For high pressure cavity scroll compressor and built-in oil separation screw compressor, oil filling can only be carried out when the compressor is running. When the compressor is shut down, please disconnect the power supply of the controller and shield the oil level fault signal detection. For details, please contact GOLDAIR.

### Dimensions [mm]



### Technical Data

Supply voltage	230VAC,50/60Hz, +10/-15%,15VA
Ambient/Storage tem.	-20 to 60°C
Medium temperature	-20 to 100°C
Max. working pressure	45bar(OUT580R) 60bar(OUT580RM)
Max. test pressure	52bar(OUT580R) 69bar(OUT580RM)
Protection class	IP65(IEC529/EN60529)
Time Delay Alarm	120±10 sec.
Time Delay Filling	8±2 sec.
Solenoid valve 1 (For OUT580R) AC 50/60Hz 230V Oil connection	MOPD: 31bar Flow rate at ΔP=3.5bar, water 3.2ltr/min. (SV20-2) 1/4-SAE (7/16"-20 UNF)
Solenoid valve 2 (For OUT580RM) AC 50/60Hz 230V Oil connection	MOPD: 31bar Flow rate at ΔP=3.5bar, water 2.0ltr/min. (SV16-2) Inlet: 1/4"-ODF or 3/8"-SAE male Exit: 1/4"-SAE male
Alarm contact (SPDT dry contact)	AC15: 2.5A,250VAC DC12: 5A,24VDC
Connecting cable	5xAWG20#, L=2m, colour coded
Solenoid cable	2xAWG20#, L=1.5m
Materials	Aluminum, PA6/PA66+GF nickel-plated Steel
Medium compatibility	HCFC, HFC, CO <sub>2</sub> , mineral, Synthetic and ester lubricants
Orientation of base unit	Horizontal, ±1°
Weight	About 1kg incl.GOA34F adapter
Order data	22G15 580R □□□



## Adapter selection guideline (See the picture above)

型号/Model	名称/Description	长度/Length (X)	总高/Length (Y)	适配压缩机系列/Compressor Series
G0A34F	3-4 孔法兰 3-4-hole Flange adapter	45	106	<b>Frascold:</b> A, B, D, F, S, V, W, Z, A-SK, D-SK, F-SK, Q-SK, S-SK <b>Bitzer:</b> 4VC, 4TC, 4TE, 4PC, 4NC, 4J, 4H, 4G, 6J, 6H, 6G, 6F, 8GC, 8FC <b>Bock:</b> HA, HG, O-Series <b>Dorin:</b> all KP, K sizes <b>Copeland:</b> 4M & 6M, D2, D3, D4, D6, D9, 4CC, 6CC, ZBH, D8D, D8S
G0A118	1-1/8"-18UNEF-2A外螺纹 1-1/8" -18 UNEF-2A Thread adapter	26	87	<b>Bitzer:</b> 2KC, 2JC, 2HC, 2GC, 2FC, 2EC, 2DC, 2CC, 4FC, 4EC, 4DC, 4CC <b>Bock:</b> HA12/22/34, HG12/22/34 <b>Dorin:</b> all H, K100C, K150C, K180C, K200CC, K230CS, K235CC, K240SB, K40CC, K50CS, K75CC/CS <b>Maneurop:</b> LT, MT, SM, SZ <b>L'UniteHerm.</b> TAH, TAG
G0A114	1-1/4" -12 UNF-2B旋转锁紧适配接头 1-1/4" -12 UNF-2B Rotalock adapter	38	99	<b>Copeland:</b> ZB15 to ZB114, ZF06 to ZF54, ZFI20 to ZFI81 ZBD21 to ZBD45 - after 06/2014, ZS21 to ZS45 - after 06/2014 <b>INVOTECH:</b> Series YM, YF
G0A134-42	1-3/4" -12 UNF-2B旋转锁紧适配接头 1-3/4" -12 UNF-2B Rotalock adapter	42	103	<b>Copeland:</b> ZB130, ZB150, ZB190, ZB220 ZFI 96, ZFI 122, ZFI 140, ZH, ZR 90, 11, 12, 16, 19 ZR250 to ZR380, ZF24 to ZF48, ZS56 to ZS11
G0A118CSH	1/8"-18UNEF-2A加长外螺纹 1/8"-18UNEF-2A Long thread adapter	96	157	<b>FUSHENG:</b> SRL-MS, SRL-DS <b>HANBELL:</b> RC2 <b>RefComp:</b> SRC-S, SRC-XS <b>Bitzer:</b> CSK, CSH
G0A34N	3/4"-14NPTF圆锥外管螺纹 3/4"-14NPTF Thread adapter	30	91	<b>Trank:</b> Series K <b>Bitzer:</b> Series ZL, ZM
G0A320F	3 孔法兰 3-hole Flange adapter	20	81	<b>INVOTECH:</b> YSM, YSF <b>Panasonic:</b> 3CC, 2CC, ACC, C-SC <b>Frascold:</b> A, B, D, Q, S, V, W, Z, A-SK, D-SK, F-SK, Q-SK, S-SK

## OUT168 Cut-off valve (Optional)

OUT168 Cut-off valve is utilized as oil circuit blockage, and installed between oil level regulator and adapter; which could be switched off when maintenance needs and replacement of oil level regulator, And it is not necessary to drain the oil within the compressor.

1. Install OUT168 Cut-off valve horizontally, and valve cap on the left, tighten bolts.

2. OUT168 cut-off valve is defaulted as open status when out factory.

3. When it needs technique maintenance, Firstly, remove the valve cap, and then tighten the upper and lower valve spool anticlockwise until completely closed. Also, could remove oil level monitor to maintenance, keep oil level monitor in place after maintenance, then turn the spool of the two stop valves anticlockwise about 4 rounds (not exceeding 5 rounds) to the completely open status. Ultimately, tighten the valve cap completely again to a permanent seal.

## Application Considerations

1. Check the flexibility of the swing arm to follow the oil level regularly. If the magnetic swing arm float is adsorbed by black grease, please clean it in time.

2. Install the oil circuit outlet of the storage type oil separator in sequence as stop valve and 300 mesh (50um) filter so that it prevents impurities entering the solenoid from jams, oil leakage. It is suitable to use  $\Phi 6.35 \times 0.8$  copper pipe to connect with solenoid valve inlet branch. And it could be optional to choose above  $\Phi 4$ mm hose with inner hole to connect the compressor filler solenoid filter.

3. It is suitable to choose the charging port that is directly connected with the crankcase oil sump and should be at least 5mm higher than the oil sight glass port. Please install the maintenance valve in the oil charging port and then connect with the solenoid valve. It can be selected as an oil charging port on the suction shut-off valve.

## Caution

If any product quality issues are found under the premise of correct installation and use, please send them back to GOLDAIR for warranty or replacement. The warranty period is as agreed in the contract, and if there is no agreement, it is 18 months.

GOLDAIR shall not be liable for the round-trip shipping costs of the warranty product or for any incidental losses to property or personnel that may arise from the use of the product.